

where eyecare comes first

Spring/Summer

- 1) Sunglasses
- 2) OCT
- 3) Children's Eyes
- 4) Cataract
- 5) Colour blindness
- 6) Macular Degeneration
- 7) Frame fashion



David Dowley
Eyecare Opticians

🏠 50 York Road, Acomb,
York, YO24 4LZ

☎ 01904 788 811

💻 daviddowley.co.uk

Sunglasses protect your eyes from the sun!

Wearing sunglasses reduces the risk of eye damage due to sun exposure, but does not completely eliminate it. Sunglasses help by filtering light and by protecting your eyes from damaging UV rays. If you wear contact lenses, even those with UV protection, you are still advised to wear sunglasses.

You should choose prescription sunglasses that:

- reduce glare
- filter out 99-100% of UV rays
- protect your eyes
- are comfortable to wear
- do not distort colours.

At EYECARE opticians we have a fantastic summer offer on prescription Transitions lenses.



Optical Coherence Tomography

OCT - optical coherence tomography is a non-invasive retinal imaging technology. It is similar to ultrasound but uses light (rather than sound waves) to capture cross sectional images of structures within the eye. These images can then be used to detect abnormalities or damage, helping to diagnose eye conditions such as age related macular degeneration, glaucoma and diabetic retinopathy.



Children's Eyesight



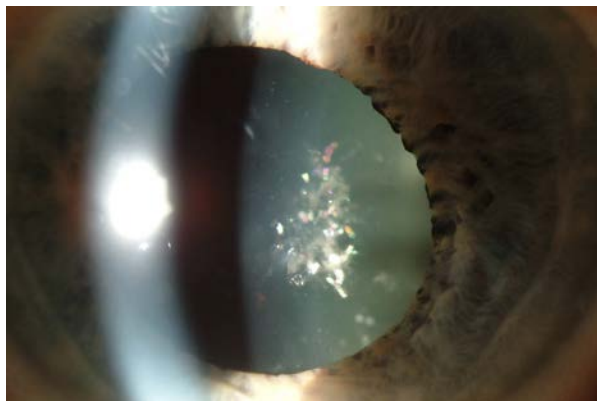
Children are not born with good eyesight it takes several years to fully develop (like speech) and a significant factor in normal development is a clear retinal image (which may need a spectacle prescription). If spectacles are required a wide variety of comfortable and stylish frames are available at EYECARE opticians, some are available without metal parts and in ultrasafe rubber/silicone materials, stronger safer and thinner lenses are also available David Dowley is one of the few people in Yorkshire who has the higher diploma qualification in assessment of children's eyes.

Cataract

A cataract is where the lens of the eye becomes cloudy, so it becomes difficult to see through. Objects may look misty or blurred, bright lights dazzle and you may see double in certain directions. The most common cause is ageing, occasionally they happen because of injury, or as a complication of other conditions. In the early stages of cataract spectacles may help you see clearly enough and we will monitor its progress regularly.

When your vision has become so poor that it seriously affects everyday life - such as driving, watching TV, or reading we will refer you to an eye specialist in the hospital and guide you through the NHS procedure. We can also arrange this privately if required. There is no need to visit your GP as we will contact them for you.

Surgery is often carried out under local anaesthetic, and usually as a daycase procedure (no overnight stay). The cloudy lens inside your eye is removed and replaced with a new, clear lens made of special plastic. Afterwards, you will need a further eye examination because the surgery always alters your spectacle prescription.



A bright narrow beam of light illuminates the pupil area showing a cataract behind.

Colour blindness

Colour defective is a better description rather than true colour blindness which is very rare.

This affects nearly 10% of men and is usually the red/green mechanism that is affected.

We can test for this and offer advice although there is no cure for a colour defect, this is important for career choice advice in children



Macular Degeneration

There are two main types of macular degeneration:

Dry AMD

Dry AMD develops when the cells of the macula (the central retinal area responsible for our high definition vision including colour perception) become damaged due to lack of nutrients and a build-up of waste products (cell membranes) called drusen. It is the most common and least serious type of AMD accounting for around 9 out of 10 cases.



The loss of vision is gradual, occurring over many years. However, an estimated 1 in 10 people with dry AMD will then go on to develop wet AMD.

Wet AMD

Wet AMD develops when abnormal (weaker) blood vessels form underneath the macula and damage its cells (doctors sometimes refer to wet AMD as neovascular AMD).

Wet AMD is more serious and without treatment, vision can deteriorate within days. Various forms of treatment are available such as lucentis injections directly into the retina to stop leakage from these abnormal blood vessels.

Fantastic Summer offer

No extra charge for Transitions lenses!*



Transitions lenses usually cost extra! But now when you buy a complete pair of glasses (with a frame over £49.95) we will give you Transitions for the same price as clear (standard) lenses

*Terms and conditions apply, please ask for details. Cannot be used in conjunction with any other offer or voucher.

Frame Fashion

Styles change every year and at EYECARE opticians we can advise you in a friendly, helpful manner in a relaxed environment. Colours are bolder this year and frame sizes larger and with the use of new materials such as special acetates and titanium this will result in lightweight spectacles

Visit for more details: www.daviddowley.com